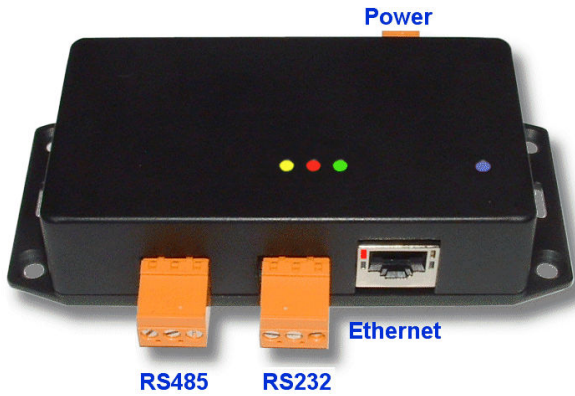
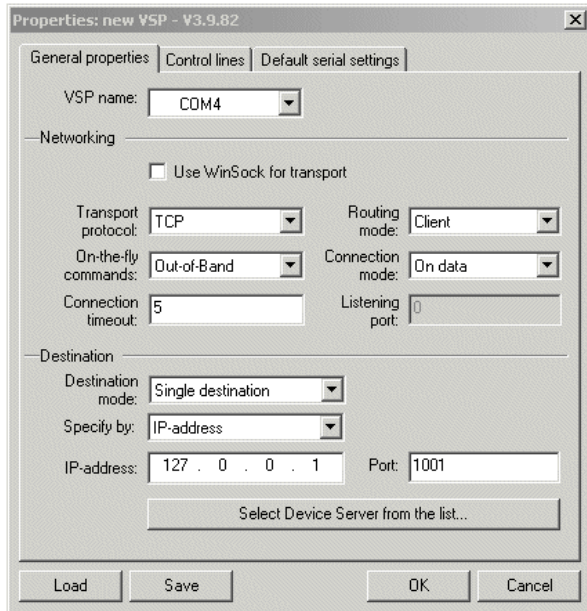


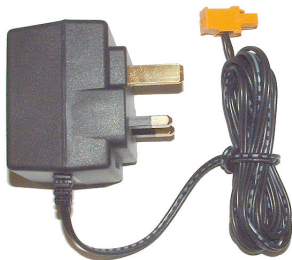
Ethernet to RS232 / RS485 converter module - LEM



- Add EtherNet connectivity to any RS232/485 device
- Create a virtual serial port or access via sockets
- Selectable RS485 line termination and biasing



Optional DC Power supply



Ordering Code

- LEM** = Basic unit with software
LEM+PSU = Basic unit with software and power supply

Most buildings have network cabling already installed.

You can connect your computer to various serial data devices through your network, with this simple converter.

Large displays, message displays and any other measurement and display devices are ideal candidates for networking.

You can even connect from your PC to a display in another building, another town or another country.

This converter uses internet protocol message packeting (IP), which allows it to be used across borders without boundaries.

Screw terminals make installation easy, and the configuration procedure is simple and fast.

Specifications:

Case width	137.0 mm max
Case forward projection	30.0mm
Case height	62.0 mm case only, 98.0mm including connectors
Typical weight	135 grams
Operating conditions	0 to 50 degrees C
Storage conditions	-20 to +70 degrees C
Case sealing	IP40
Case Material	Polycarbonate
Cable dimensions	Accepts cables up to 1.5mm diameter
Flammability Class	V0 (UL94)
Power supply	12 to 30V DC, 2 watts max.
Isolation	Ethernet isolated from power and RS232/RS485.
Ethernet Connection	RS232 and RS485 ports not isolated from power.
Serial Data ports	Standard base 10/100 RJ45
Baud rate	RS232 or RS485, switch selectable.
	Set with PC based configuration software.