

CREATING VIRTUAL COM PORT

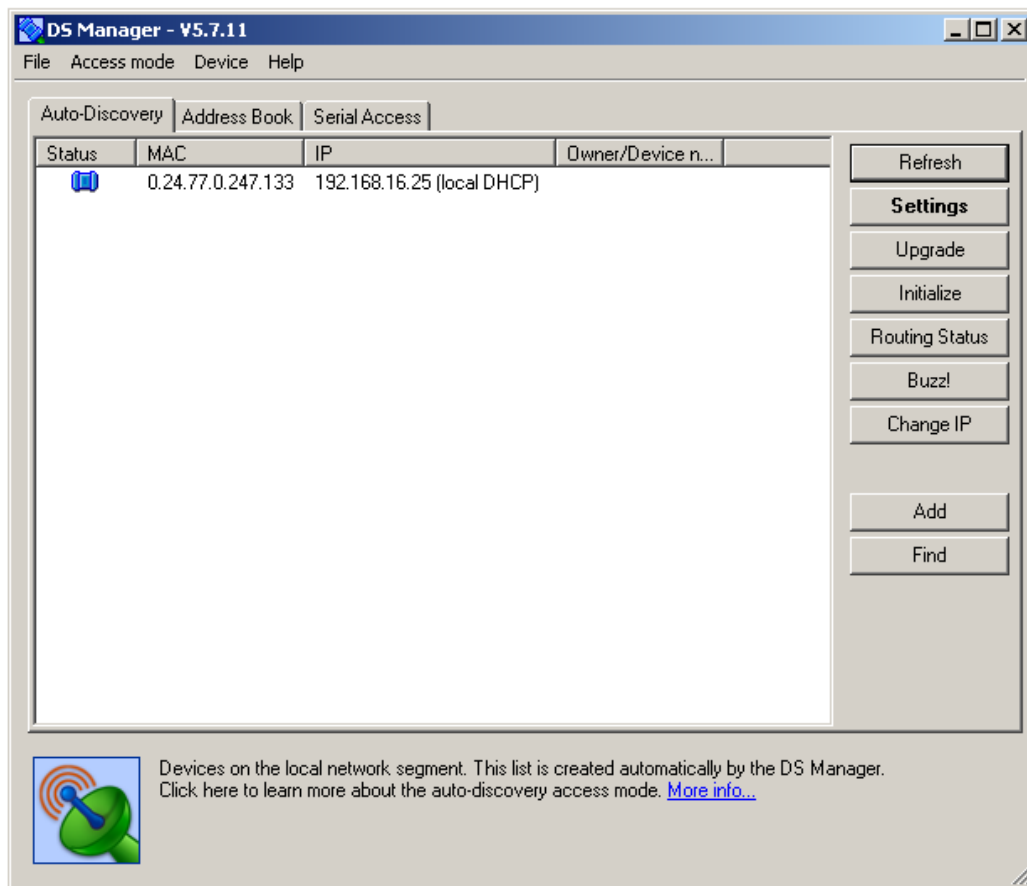
DS and VSP MANAGER

➔ Please install Tibbo software first

DS Manager

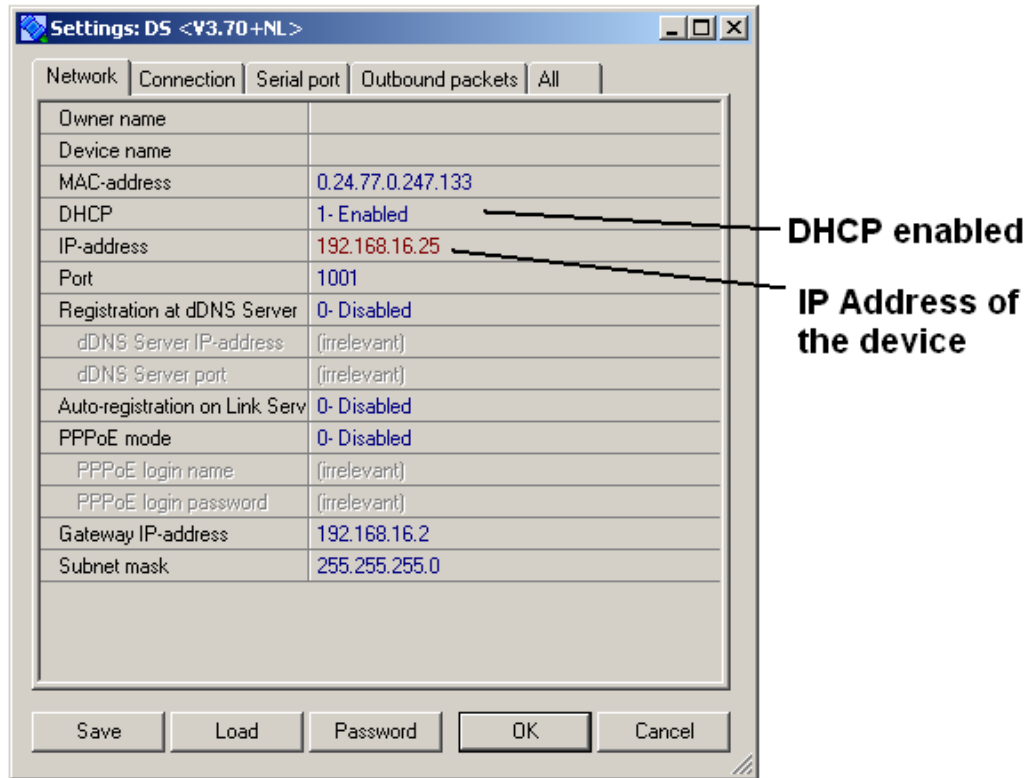
- Connect the Network cable (RJ45) to the Ethernet module
- Launch DS Manager
- Wait a few seconds
- Click Refresh

You should see this screen:



If not, press **Refresh** again.

- Go to the settings

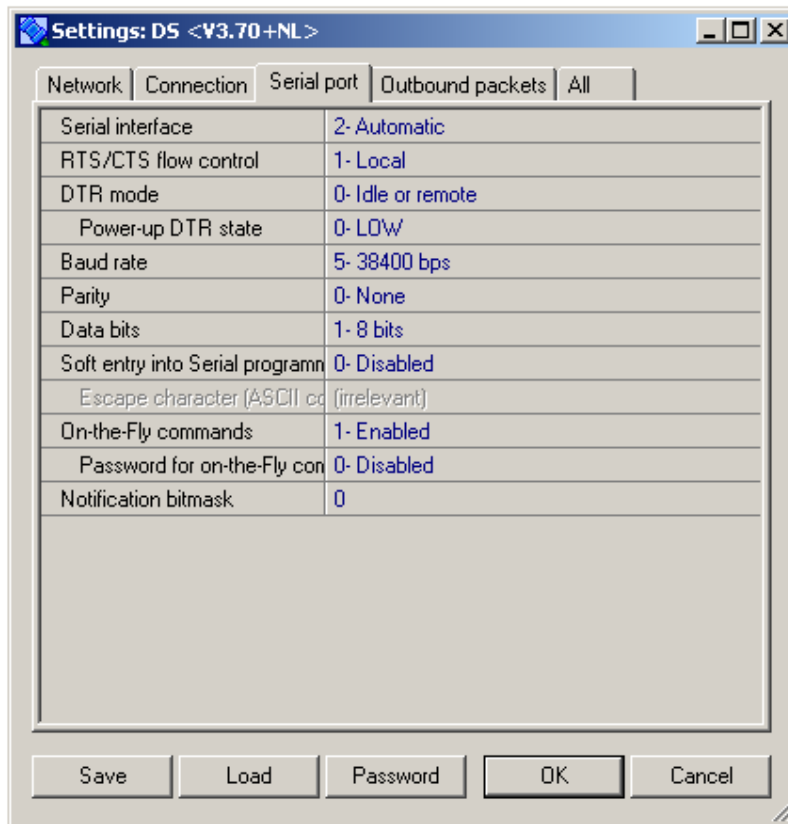


You should see the screen above.

Check the baud rate, it must match the Default Serial Settings on VSP Manager.

VSP Manager will create a Virtual Com port to communicate with the unit

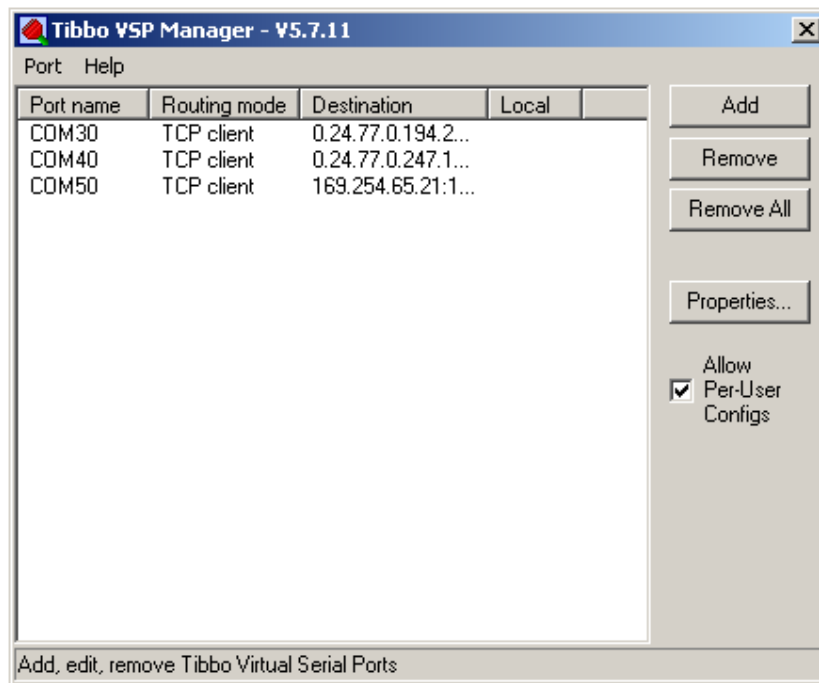
➔ Click on "Serial port" tab, and change it if necessary (it should be already set for you)



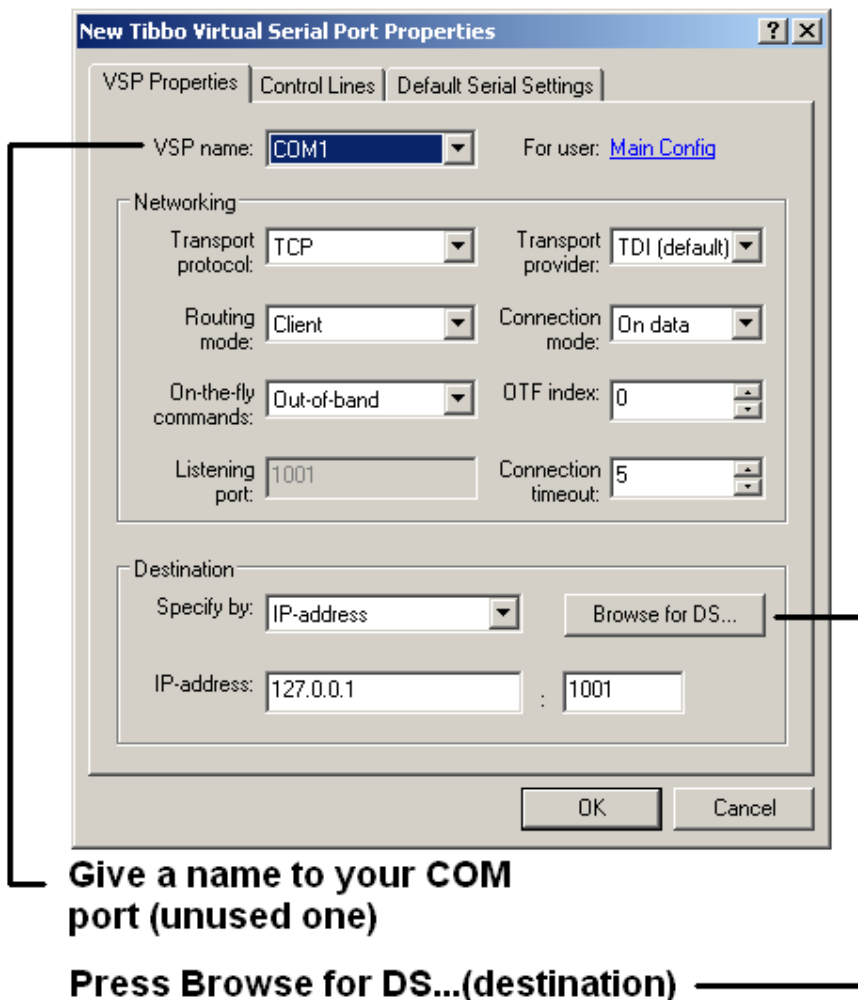
The communication is now ready to be set between the computer and the Ethernet module.

Communication between Computer and Ethernet module

VSP Manager



Press Add to create a new COM port



- Select a COM, for example COM20
- Press Browse for DS
- Select the Device wanted by double clicking on the IP Address

Go to the Default Serial Settings

Select a baud rate matching the one selected on the Settings of DS Manager.

Press OK.

You can use the new virtual com port