

# London Electronics Limited

Warren Court, Chicksands, Shefford, Bedfordshire SG17 5QB  
Tel +44(0)1462-850967 Fax +44(0)1462-850968  
www.london-electronics.com help@london-electronics.com

---

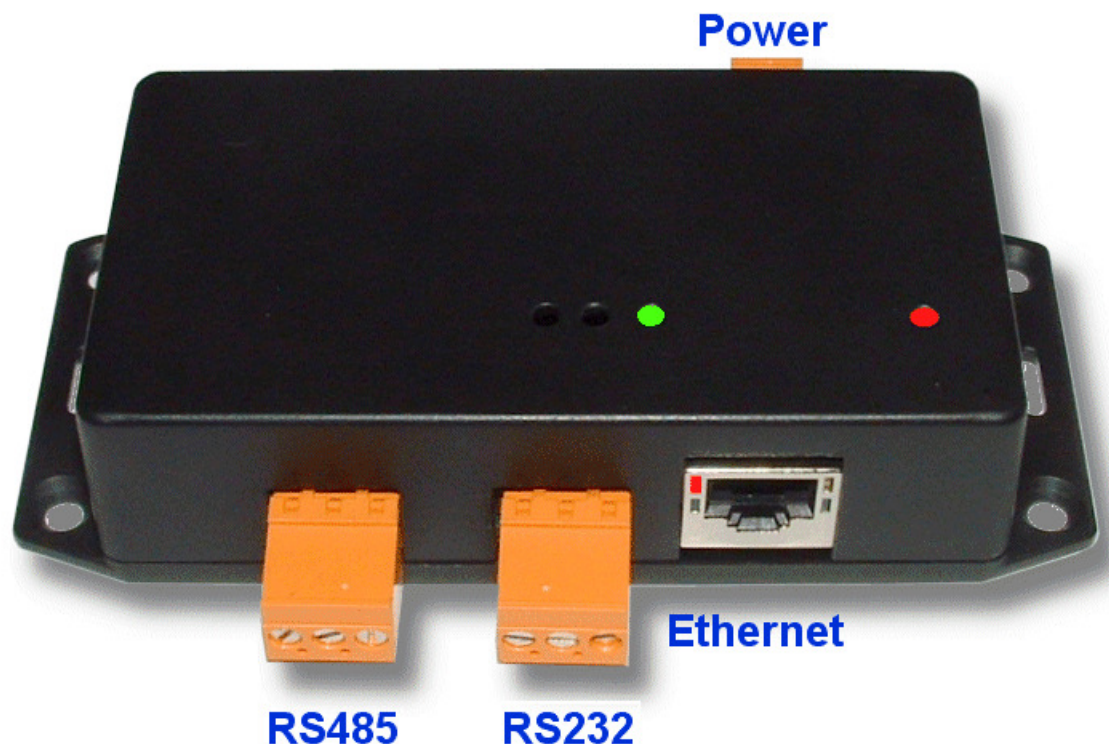
Ethernet to RS232 or RS485 data converter

## EtherNet-RS232/485

Connection details and general information

---

Ethernet 10/100 to RS232 or RS485 converter



notes

# Alphabetic Index

Introduction	page 4
Warnings	page 5
Description	page 6
What is included?	page 7
Specifications	page 8
Connections and Switches	page 9
PC Configuration - start	page 10
PC Configuration - General properties	page 11
PC Configuration - Control lines	page 12
PC Configuration - Default serial settings	page 13
PC Configuration - Address Book	page 14
PC Configuration - Network	page 15
PC Configuration - Connection	page 16
PC Configuration - Serial port	page 17
PC Configuration - Outbound packets	page 18
LED Functions	page 19
Connecting to a message display	page 20

# Introduction

Please contact us if you need help, if you have a complaint, or if you have suggestions to help us improve our products or services for you.

If you contact us about a product you already have, please tell us the full model number and serial number, so that we can give you accurate and fast help.

This product has a 2 year warranty. We will put right or replace any item which is faulty because of bad workmanship or materials. This warranty does not cover damage caused by misuse or accident.

## **IMPORTANT**

If this equipment is important to your process, you may want to buy a spare to cover possible failure or accidental damage in the future.

This is because at some times, for example during our factory shutdown periods, you may have to wait several weeks for an equivalent replacement. Or, we may have no stock at the time you urgently need it.

You may also need to pay extra carriage charges if you want a fast, guaranteed courier service. Warranty repairs or replacements are normally returned with a standard courier service.

We do not offer any compensation for losses caused by failure of this instrument.

If you do not agree with these conditions, please return this item now, in unused, clean condition, in its original packaging and we will refund the purchase price, excluding any carriage paid.

We thought you'd prefer to know about possible delays and extra charges now, rather than during a panic.

We always try to improve our products and services, so these may change over time. You should keep this manual safely, because future manuals, for new designs, may not describe this product accurately.

We believe these instructions are accurate, and that we have competently designed and manufactured the product, but please let us know if you find any errors.



# Warnings

**Please carefully read all warnings and ONLY install the item when you are sure that you've covered all aspects.**

- \* Connect the equipment according to current IEE regulations and separate all wiring according to IEC1010.
  
- \* Power supplies to this equipment must have anti-surge (T) fuses rated at 1A for DC supplies in the range 11-30VDC.
  
- \* Check that the model number and supply voltage suit your application before you install the equipment.
  
- \* Don't touch any circuitry after you have connected the equipment, because there may be lethal voltages on the circuit board or connector terminals.
  
- \* Only adjust on-board switches or connections with the power turned off.
  
- \* Make sure all screw terminals are tight before you switch the equipment on.
  
- \* Only clean the equipment with a soft dry lint-free cloth. Do not use any solvents.

***Safety First .....Don't assume anything..... Always double check.  
If in doubt, ask someone who is QUALIFIED to help you in the subject.***

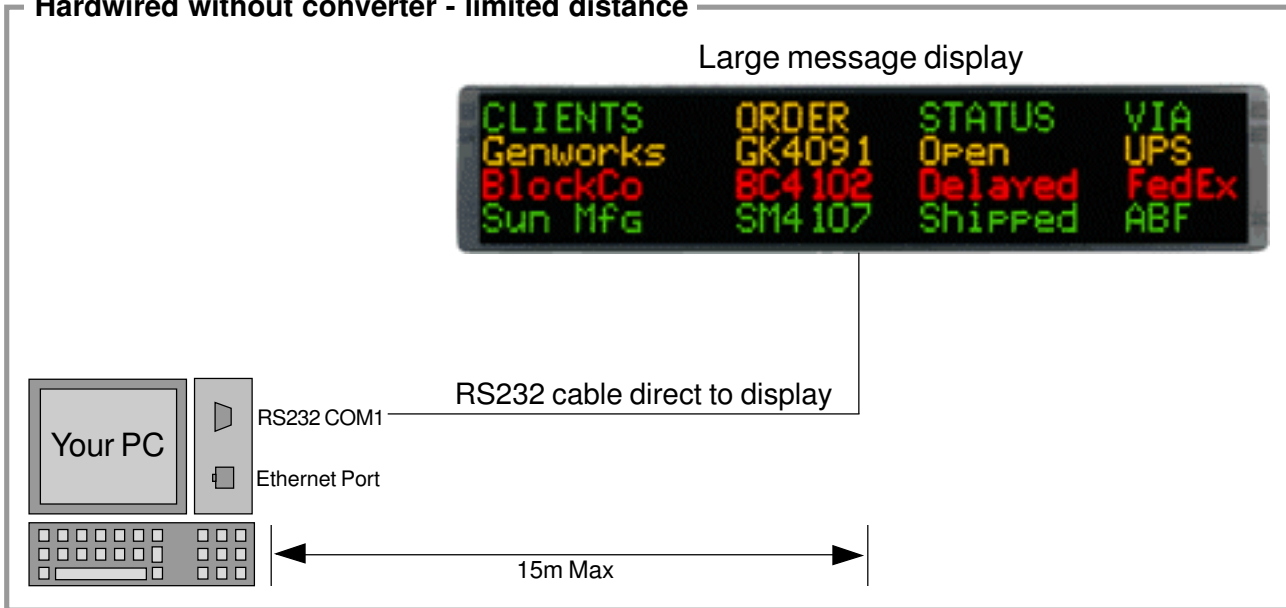
# Description

This device allows you to connect RS232 or RS485 equipment onto an Ethernet network. This is ideal for such products as message displays, large numeric displays etc, which may be located far from your PC.

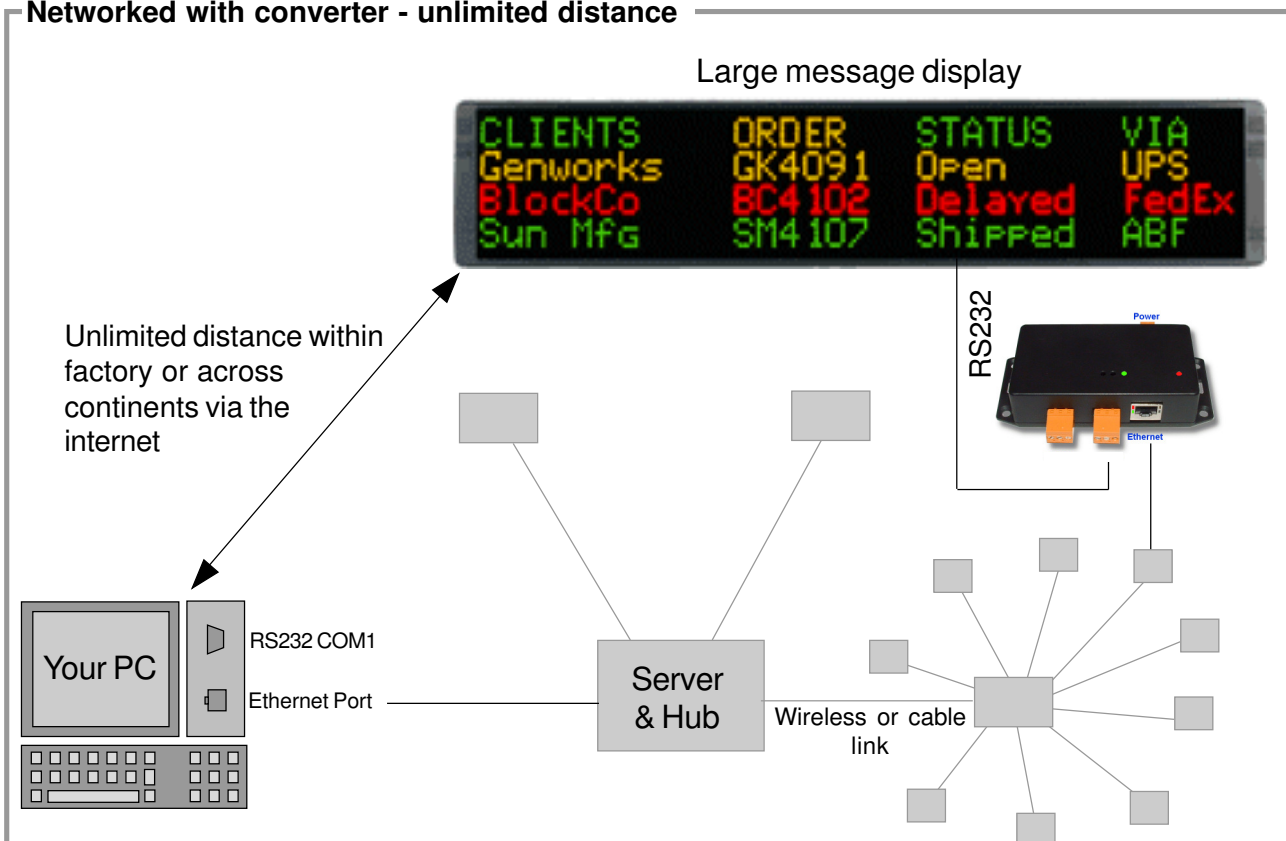
It creates a 'Virtual Serial Port' on your computer, which means you can use the standard application software for the RS232 or RS485 device. You can then treat the device just as if it were connected directly to your RS232 port on the back of your PC.

The Ethernet converter will mount next to your serial RS232 device.

## Hardwired without converter - limited distance

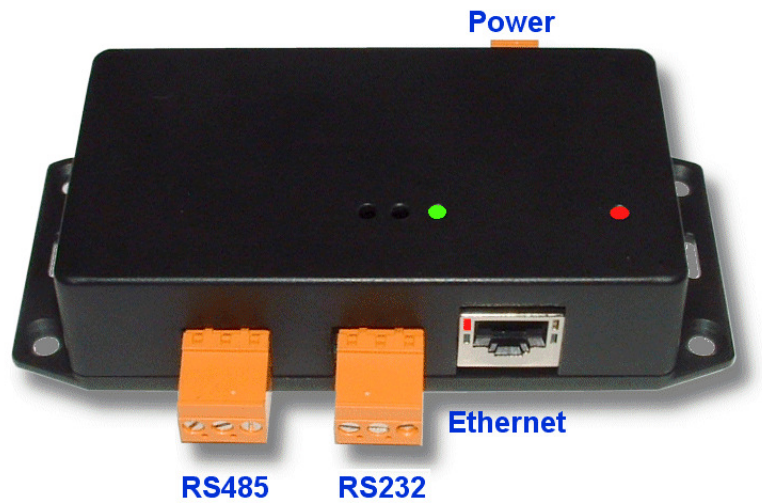


## Networked with converter - unlimited distance



# What is included?

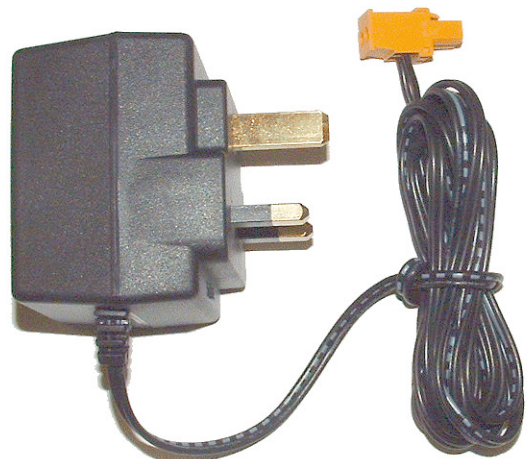
1 x Ethernet to Serial converter.



1 x PC Configuration software

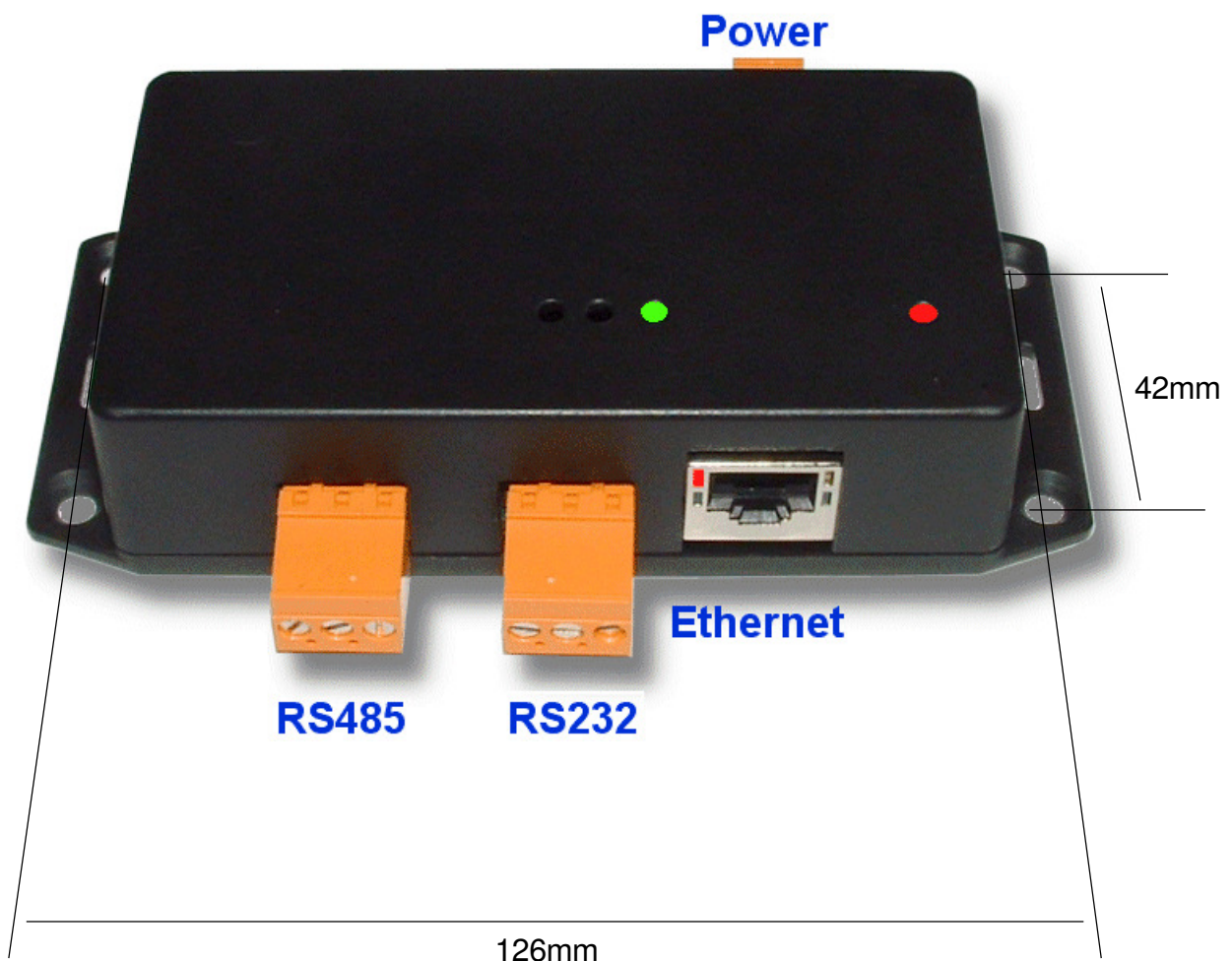


1 x 12V DC power supply  
(Only included if ordered)



# Specifications

Case width	:	137.0 mm max
Case forward projection	:	30.0 mm
Case height	:	62.0 mm case only, 98.0mm including connectors
Typical weight	:	135 grams
Operating conditions	:	0 to 50 degrees C
Storage conditions	:	-20 to +70 degrees C
Case sealing	:	IP40
Case Material	:	PolyCARBONATE
Cable dimensions	:	Accepts cables up to 1.5mm diameter.
Flammability Class	:	V0 (UL94)
Power supply	:	12 to 30V DC, 2 watts max.
Isolation	:	Ethernet isolated from power and RS232/RS485 RS232 and RS485 ports not isolated from power.
Ethernet Connection	:	Standard base 10/100 RJ45
Serial Data ports	:	RS232 or RS485, switch selectable. Baud rate set with PC based configuration software.



Mounting holes are countersunk, 4.2mm diameter  
Screws not supplied.

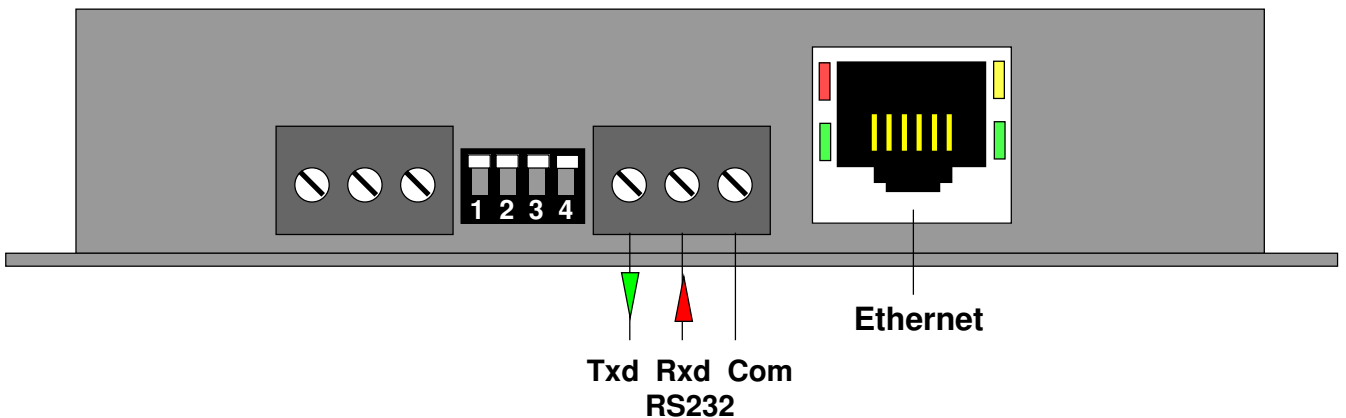
# Connections & Switches

**Note: Only move switches when the converter is switched off**

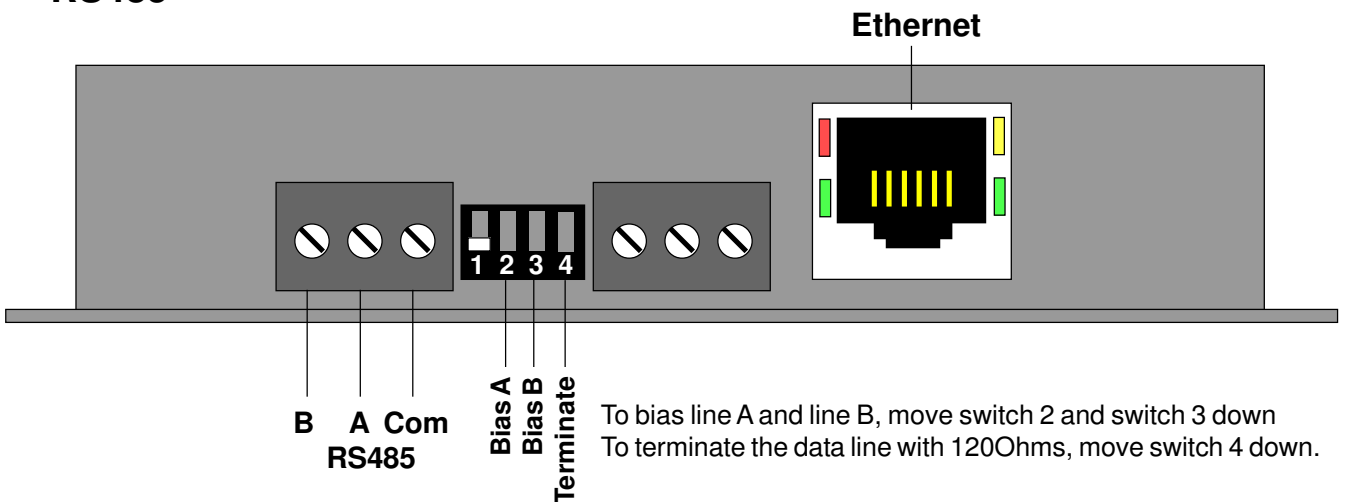
## 12 - 30V DC Power



## RS232

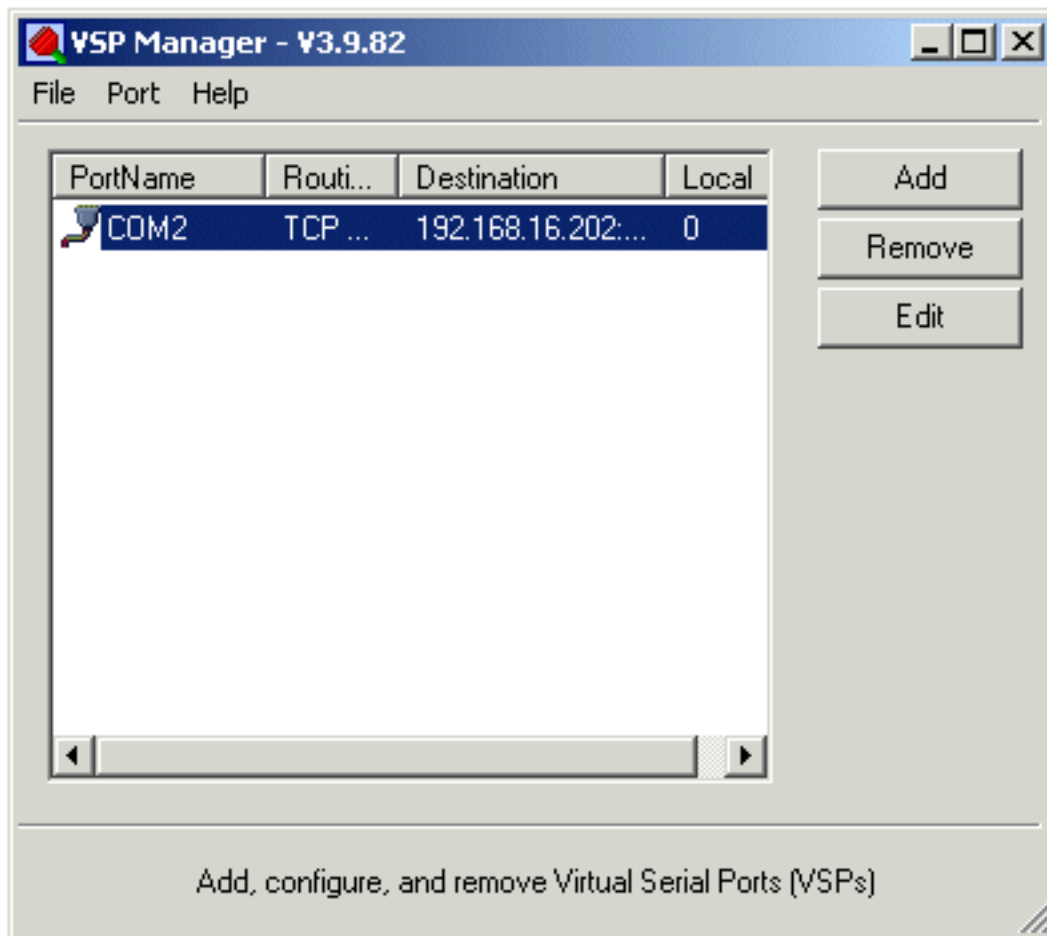


## RS485



# PC Configuration

To add a port, click the Add button



Settings shown are examples only.  
You will need to choose your own settings to suit your network.

# PC Configuration

Choose a COM port and IP address...

Properties: new VSP - V3.9.82

General properties | Control lines | Default serial settings

VSP name: COM4

Networking

Use WinSock for transport

Transport protocol: TCP Routing mode: Client

On-the-fly commands: Out-of-Band Connection mode: On data

Connection timeout: 5 Listening port: 0

Destination

Destination mode: Single destination

Specify by: IP-address

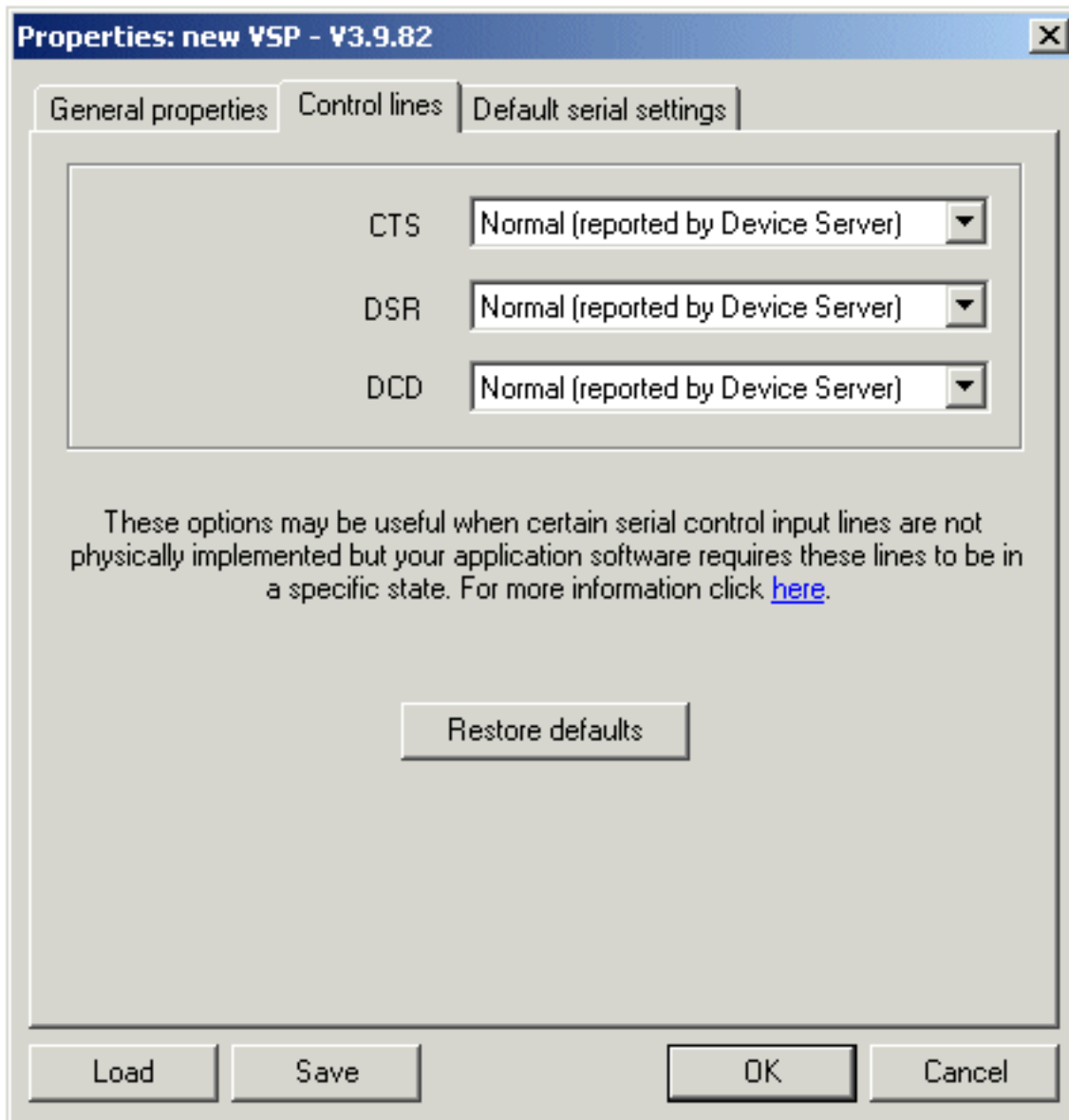
IP-address: 127 . 0 . 0 . 1 Port: 1001

Select Device Server from the list...

Load Save OK Cancel

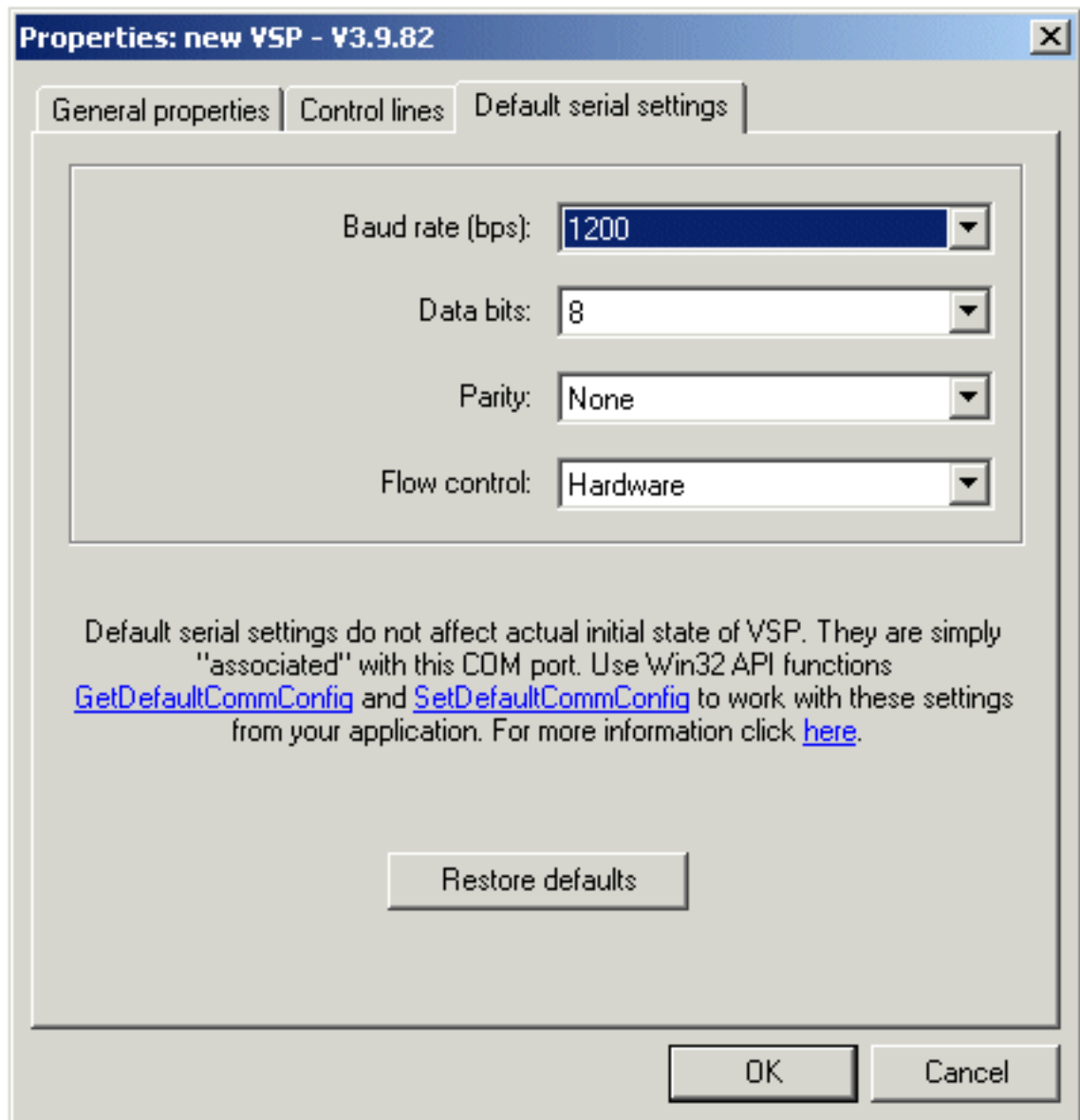
Settings shown are examples only.  
You will need to choose your own settings to suit your network.

# PC Configuration



Settings shown are examples only.  
You will need to choose your own settings to suit your network.

# PC Configuration



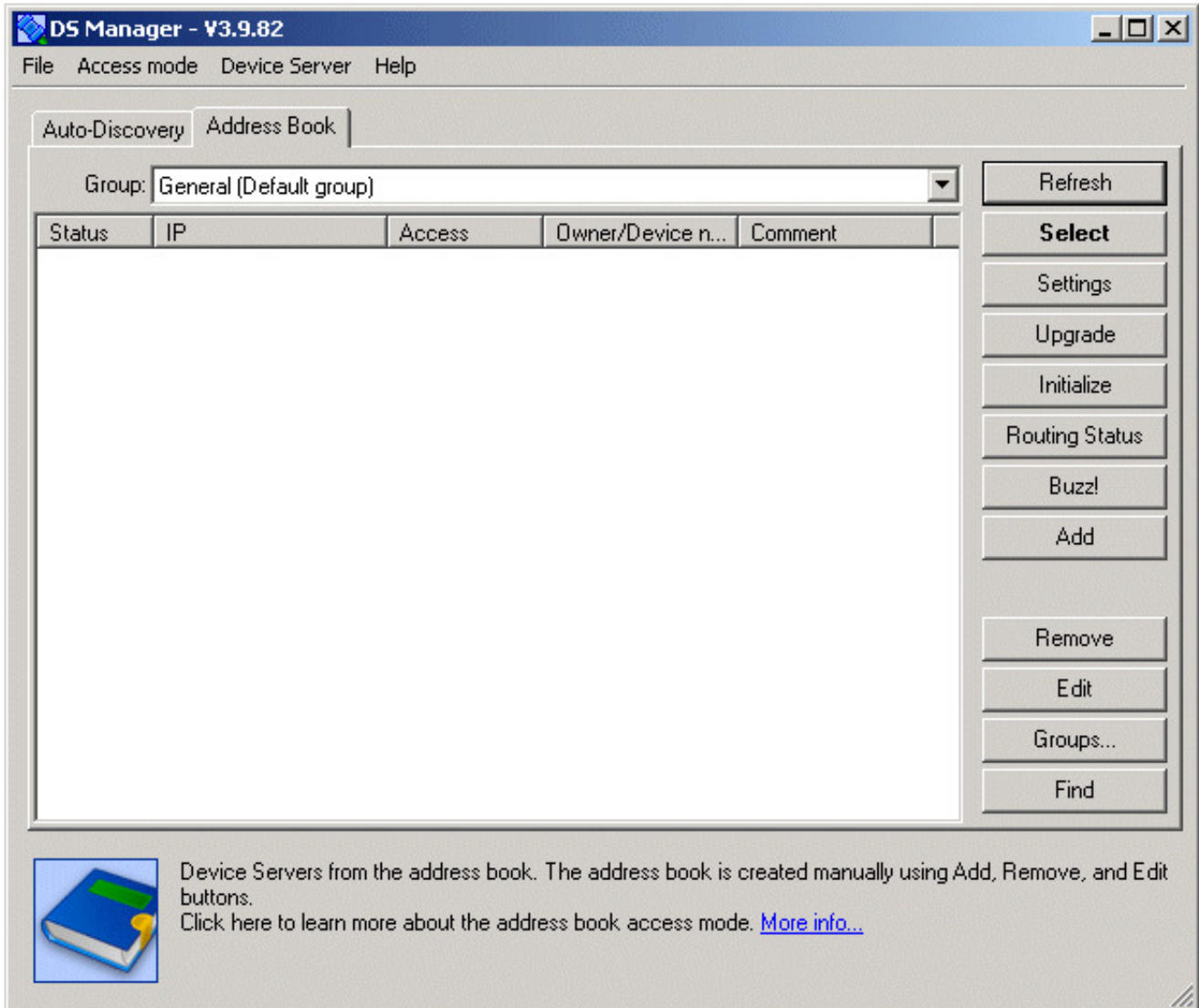
Settings shown are examples only.

You will need to choose your own settings to suit your network.

If connecting to our message displays, you will need to choose 9600 baud by default.

# PC Configuration

You may need to turn off your firewall during auto discovery.



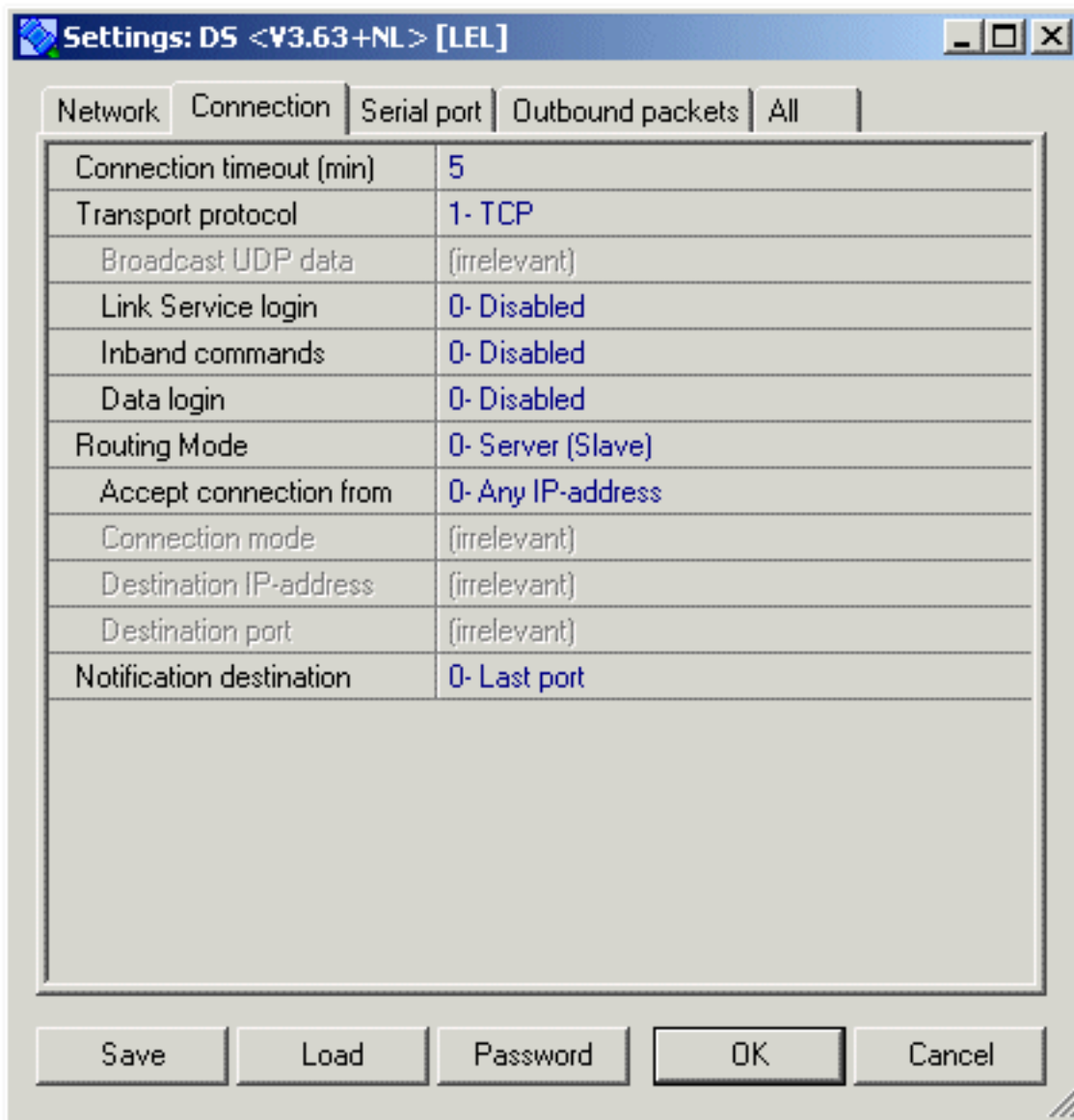
The screenshot shows the DS Manager v3.9.82 application window. The title bar reads "DS Manager - v3.9.82" and the menu bar includes "File", "Access mode", "Device Server", and "Help". The "Address Book" tab is selected, showing a "Group:" dropdown menu set to "General (Default group)". Below this is a table with columns: Status, IP, Access, Owner/Device n..., and Comment. The table is currently empty. To the right of the table is a vertical stack of buttons: Refresh, Select, Settings, Upgrade, Initialize, Routing Status, Buzz!, Add, Remove, Edit, Groups..., and Find. At the bottom left, there is a blue book icon with a yellow ribbon. To its right, text reads: "Device Servers from the address book. The address book is created manually using Add, Remove, and Edit buttons. Click here to learn more about the address book access mode. [More info...](#)"

# PC Configuration

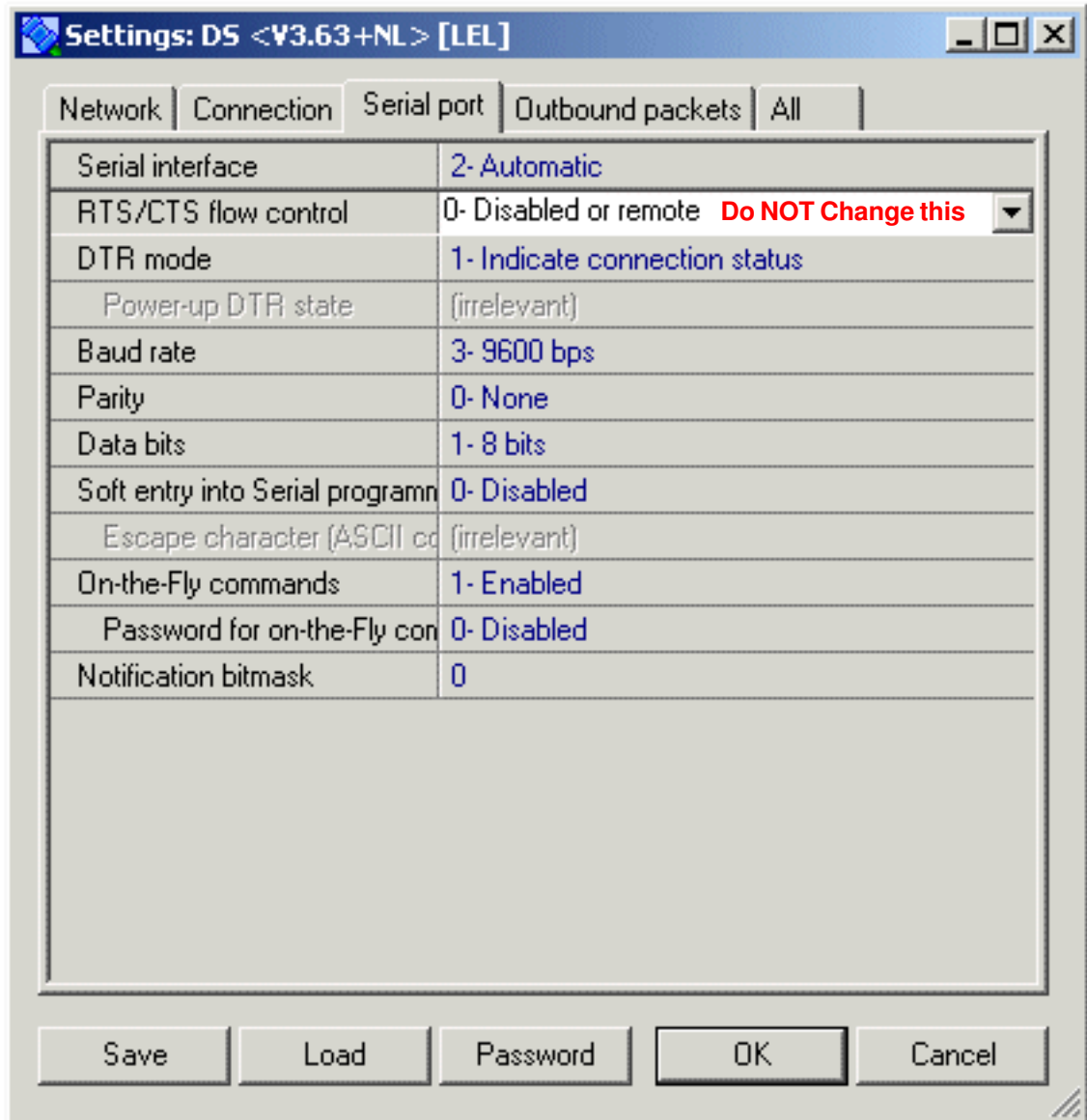
Parameter	Value
Owner name	LEL
Device name	D001
MAC-address	0.202.0.0.47.63
DHCP	0- Disabled
IP-address	192.168.16.202
Port	1001
Registration at dDNS Server	0- Disabled
dDNS Server IP-address	(irrelevant)
dDNS Server port	(irrelevant)
Auto-registration on Link Serv	0- Disabled
PPPoE mode	0- Disabled
PPPoE login name	(irrelevant)
PPPoE login password	(irrelevant)
Gateway IP-address	192.168.0.100
Subnet mask	255.255.255.0

Buttons: Save, Load, Password, OK, Cancel

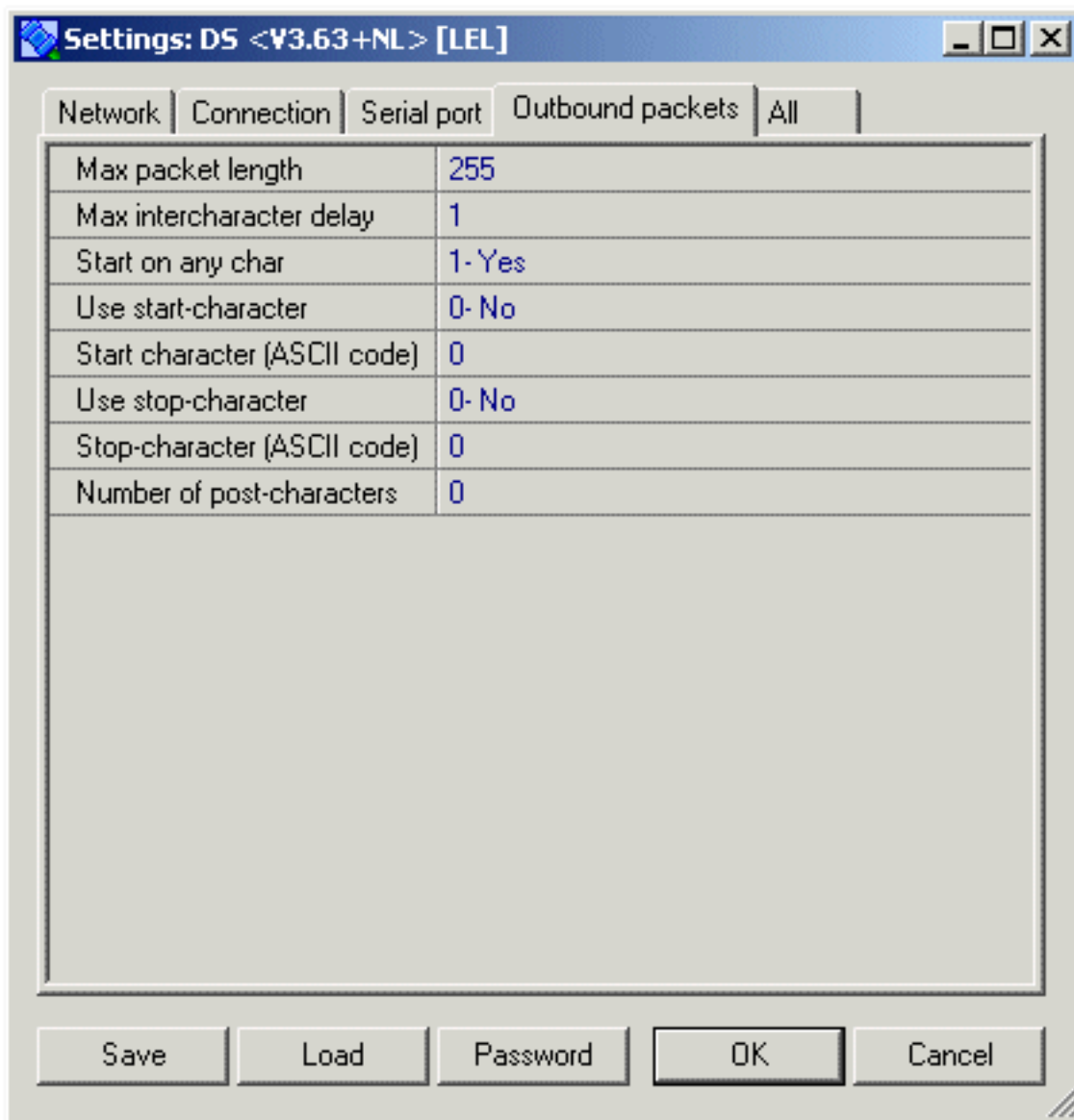
# PC Configuration



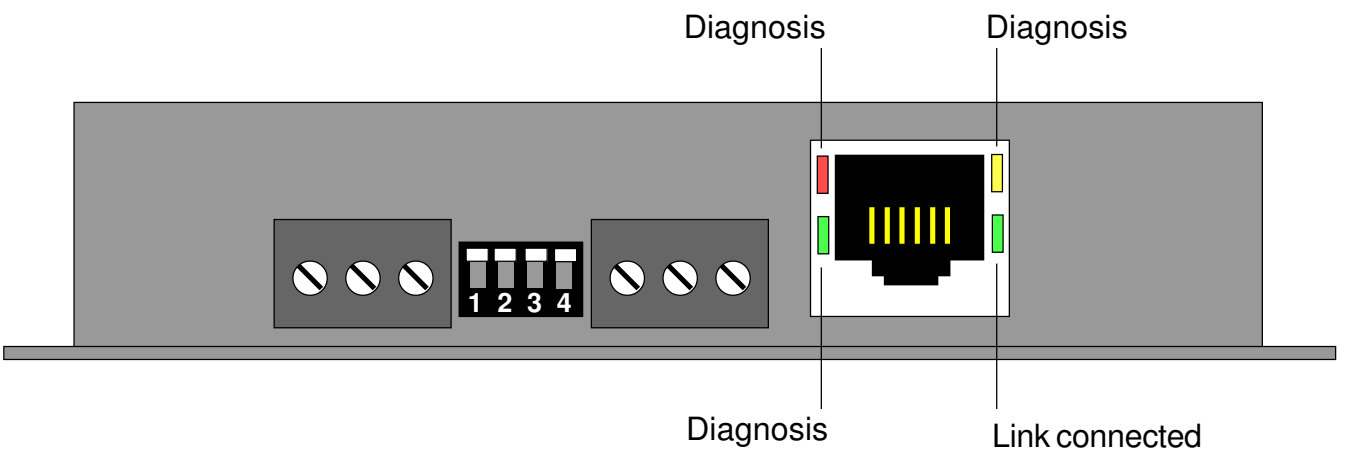
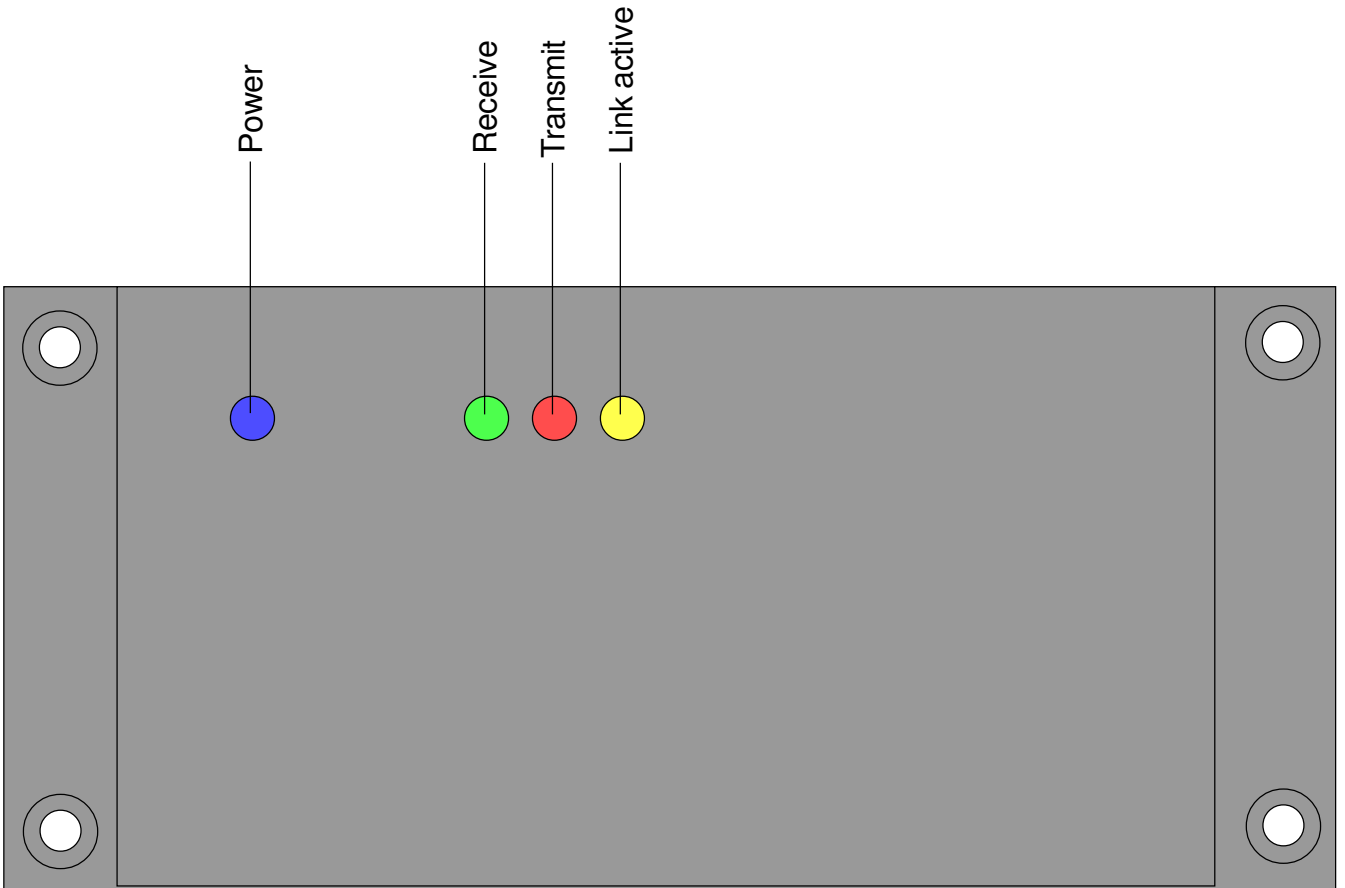
# PC Configuration



# PC Configuration



# LED Functions



# Connections to a message display

Choose the correct data port for your application. You can only use 1 chosen port.

**RS232** port is best for short distance cabling to a display less than 15m away.

**RS485** port is necessary for cabling distances over 15m and is necessary if you want to connect more than one display to the Ethernet converter.

